

**enclosed**

**III**

for solo piano

**Jennie  
Gottschalk**

*for David Kalhous*



throughout

Hold lowest F-C white-note cluster with the left hand throughout the performance:

All other notes are played by the right hand in the lowest possible register.



No pedal is used.

Use a full stick.

Number of beams indicate approximate speeds. Speeds within beamed groups are consistent, but the relationship between one group and the next need not be proportional.

Pause between each gesture for as long as the resonance remains interesting and active.

Choose dynamic levels that bring out maximum resonant activity. Generally these will be quite high (f-fff).

Amplification may be used in larger rooms.

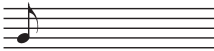
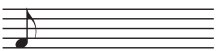
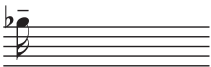
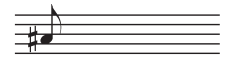
# enclosed II

for solo piano



**LH**

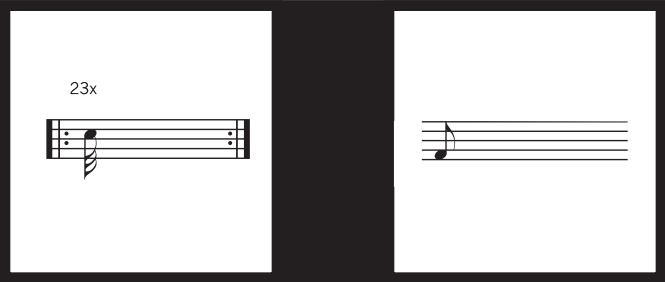
**Jennie  
Gottschalk**



5x

11x

23x

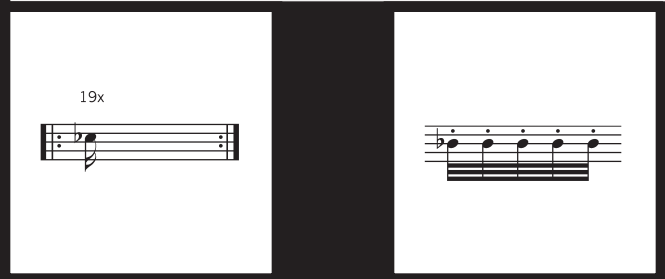


This block contains two musical staves. The first staff shows a guitar chord with a barre across the first fret, indicated by the number '23x'. The second staff shows a single eighth note on the first line of the staff.

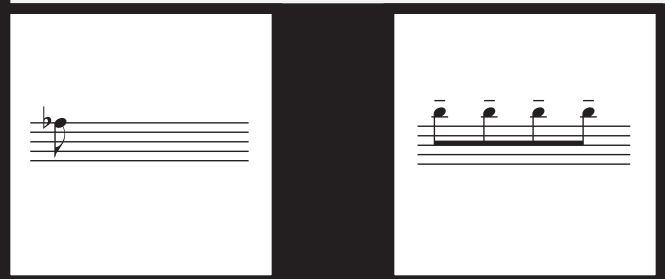


This block contains four musical staves. The first staff has three eighth notes on the first line. The second staff has two chords: a D major chord and a D major chord with a sharp sign. The third staff has a complex chord with multiple notes. The fourth staff has a chord with a sharp sign and a '4x' label above it.

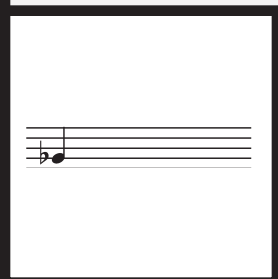
19x



This block contains two musical staves. The first staff shows a guitar chord with a barre across the first fret, indicated by the number '19x'. The second staff shows a sequence of four eighth notes on the first line.



This block contains two musical staves. The first staff shows a single eighth note on the first line. The second staff shows a sequence of four eighth notes on the first line.



This block contains a single musical staff with a single eighth note on the first line.